

Arena controller

Powerful Wi-Fi Cloud Controller

Product Highlights

- Powerful Wi-Fi service gateway
- Hotspots/Hotzones and cellular offloading services
- Up to 5000 Wi-Fi AP's, PtP radio devices up to 100,000 users per Controller
- Scalable to millions of Wi-Fi users
- Hides Wi-Fi access complexities
- Secured control layer management
- Cost effective and scalable network architecture with centralized control plane and distributed data plane
- Support for wholesale business model with multiple hosted carriers with full security and service isolation
- Support Ultra PtP radio, Indoor & Outdoor AP's type

Main Segments

- Corporate/Enterprise
- Mining
- Oil & Gas
- Transportation
- WISP
- Utilities
- Education
- Public Safety
- Hospitality



Arena controller

Powerful Wi-Fi Cloud Controller

The Arena acts as mediation device between the operator's control core and the Wi-Fi infrastructure, hiding the PtP radio and Wi-Fi access-specific complexities from operator's core network.

Overview

The Arena is a focal point for controlling the Wi-Fi cloud, complementing Alvarion's carrier-grade Wi-Fi solution.

Arena is an essential element for constructing large scale carrier Wi-Fi networks for hotspot/hotzones and cellular offloading services.

Arena performs mission critical functions that include RADIUS mediation – maintaining a single RADIUS peer to the operator's AAA, Rogue AP prevention, zero touch provisioning, or SON (Self Organized Network), mobility management and Passpoint™ (Hotspot 2.0) gateway support.

Arena can scale to support up to 5,000 of Alvarion's carrier-grade Ultra PtP radio and Wi-Fi AP's with full redundancy.

Arena supports Wholesale business models and virtual network operations reducing CAPEX and OPEX as a single Arena appliance provides segregated services to multiple operators.

Arena comes pre-installed on a telecom grade power server appliance, is rack mountable, and can be set up in high availability configuration for maximum service availability.

Benefits

- Powerful Wi-Fi service gateway
- Hotspots/Hotzones and cellular offloading services
- Up to 5000 AP's, PtP radio devices and 100,000 users per Controller
- Scalable to millions of Wi-Fi users
- Hides Wi-Fi access complexities
- Secured control layer management
- Cost effective and scalable network architecture with centralized control plane and distributed data plane
- High availability
- Support for wholesale business model with multiple hosted carriers with full security and service isolation
- Support Ultra PtP radio, Indoor & Outdoor AP's type
- Pre-paid and post-paid services
- Central management, to manage and monitor Ultra PtP radio and Wi-Fi AP's



Arena Controller

Specifications

| | |
|-------------------------|------------------------------------------------------------------------------------------------------------------------------------------------------------------------------------------------------------------------------------------------------------------------------------------------|
| Capacity | Up to 5000 AP's and 100,000 end-users per Controller |
| Scalability | Multiple Arena units can be stacked to provide access to millions of users Centralized control plane with distributed data plane maximizes data throughput by eliminating the need to send traffic to a central location |
| AAA gateway | <ul style="list-style-type: none"> • Authentication, Authorization and Accounting gateway to operator's RADIUS server • Providing a single peer to the AAA – critical for Wi-Fi network scalability • Pre-paid enforcement and Post-paid accounting |
| User Authentication | <ul style="list-style-type: none"> • Guest-networking support • Support for secured user authentication using 802.1x EAP methods and captive portal |
| Zero touch provisioning | Automatic AP units detection, configuration and firmware distribution |
| Security | Rogue AP prevention and Passpoint™ secured access Dynamic VLAN assignment |
| Wi-Fi Mobility | UE security key caching for fast Wi-Fi handovers |
| BW Management & SLA | Users access profiles supporting Service Level Agreement (SLA) setting bandwidth thresholds per user, per direction, per SSID (VAP) and per AP |
| Passpoint™ gateway | Passpoint™ gateway for back-office integration and 802.11u AP's operation |
| Management | <ul style="list-style-type: none"> • AP management through SNMP and secured tunnels • Ultra PtP radio, web and SNMP northbound management |
| Infrastructure sharing | <ul style="list-style-type: none"> • Statistics and reporting* • Supporting wholesale business models and virtual network operations • Security, QoS and service segregation among carriers • A separate controller management interface per carrier |
| MESH | Supported |
| DHCP SERVER | Supported |

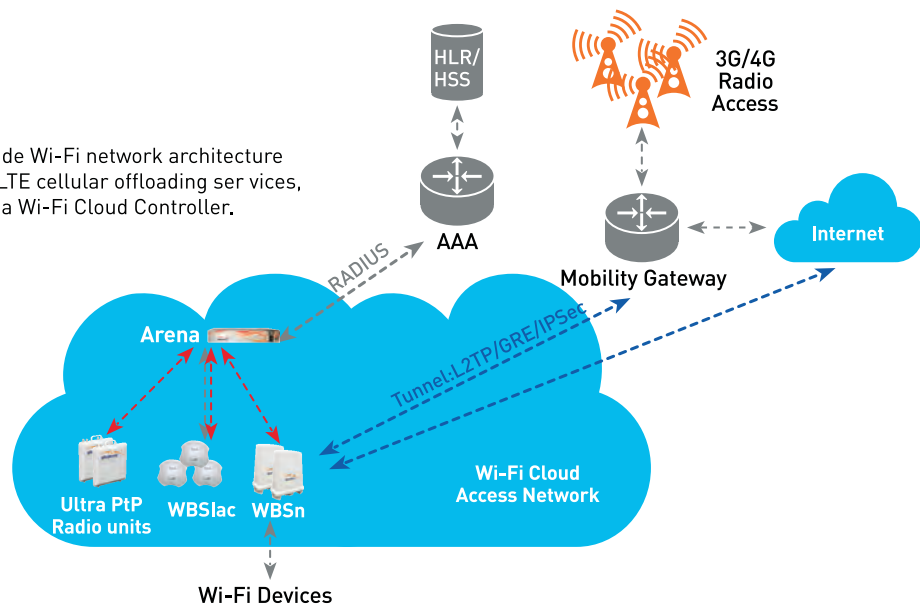
*contact Alvarion for info & availability

Ordering Information

Features

| | | |
|---------|-------------------|---------------------------------------------------------------------------------------------------------------------------|
| 6040004 | Arena -25 | AR-25 Wireless Controller, supporting up to 25 Ultra radio units and APs license. Including license for 10APs |
| 6050004 | Arena -100 | AR-100 Wireless Controller, supporting up to 100 Ultra radio units and APs license. Including license for 25APs |
| 6060004 | Arena -1000 | AR-1000 Wireless Controller, supporting up to 1000 Ultra radio units and APs license. Including license for 100APs |
| 6070004 | Arena -Enterprise | AR- Enterprise Wireless Controller, supporting up to 5000 Ultra radio units and APs license. Including license for 500APs |

Alvarion Carrier Grade Wi-Fi network architecture for Hotspot and 3G/LTE cellular offloading services, with innovative Arena Wi-Fi Cloud Controller.





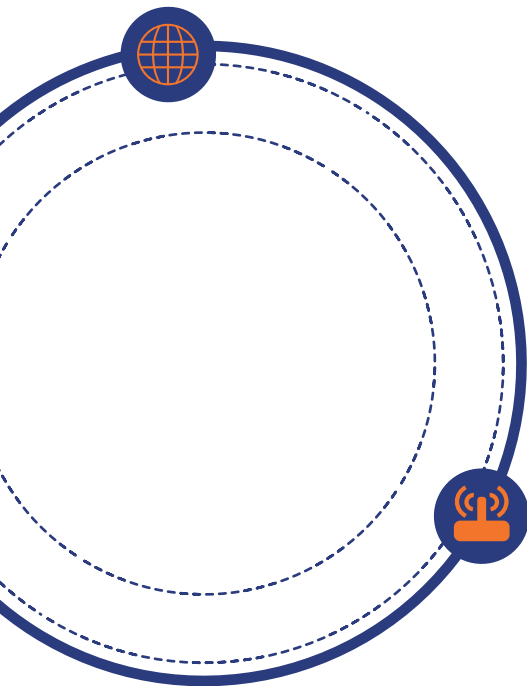
About Alvarion Technologies

Alvarion Technologies is a global provider of autonomous Wi-Fi networks designed with self-organizing capabilities that enable constantly optimized performance. We are guided by our belief that the sustainability of any network stems from the combined strength of its elements.

We have developed an approach that is transforming Wi-Fi from a "dumb pipe" into a goldmine of actionable data.

Alvarion designs solutions for Carrier Wi-Fi, Enterprise Connectivity, Smart City, Smart Hospitality, Connected Campuses and Connected Events that are both complete and heterogeneous to ensure ease of use and optimize operational efficiency. Carriers, Local Governments and Hospitality sectors worldwide deploy our intelligent Wi-Fi networks to enhance productivity and performance, directly and for the long term.

With over 25,000 sites in over 95 countries, our experience and know-how has enabled us to become a proactive contributor to the evolution of the Global Communications Network. As in everything we do, our commitment to elevating the Wi-Fi experience is reflected in our offering.



Alvarion Technologies

3, Arie Shenkar St.
Herzliya, 4672501
Israel
Tel: +972-3-7674200

sales@alvarion.com // www.alvarion.com