

WBSn Base Station Specifications

Features

- **Virtual APs (VAPs) per band**
- **WDS**
- **Passpoint™ certified**
- **QoS**
WMM with four priority queues
Prioritization: VLAN, DSCP
- **Mesh** - self healing meshing; self backhaul
- **VLAN support: 4095**
VLAN termination, VLAN trunk (multiple VLANs per VAP), QinQ, Dynamic VLAN assignment by RADIUS
- **Bridge and Router modes**
- **Cooperate with Access Controller**
Portal redirection, walled garden, accounting
- **Hotspot functionality support**

Security

- **Wireless Security:**
Open, WEP, 802.11i (WPA, WPA2)
- **Authentication:**
Pre-Shared-Key (PSK) and 802.1X-RADIUS (supporting EAP-TLS, EAP-TTLS, PEAP, EAP-AKA, EAP-SIM)
- Encryption: WEP, AES
- Standalone or controller based management
- **Network securities:**
WiFi client isolation, Access Control List (ACL)
- Alvarion operation system

Management

- Managed by the Arena controller
- SNMP
- HTTP/HTTPS

Environmental Specifications

- **Outdoor WBSn**
 - Operating temperature: - 40° to 55°C
 - Storage temperature: - 40° to 85°C
 - Humidity: 0 to 95 % non-condensing
 - Enclosure: IP68-, corrosion-resistant
 - Wind survivability: 165 Mph

Approvals

- Radio: FCC 47 CFR part 15C, EN 502 302, EN 893 301, EN 328 300
- Safety: UL 1:2007-60950, UL 22:2007-60950 CAN/CSA-C22.2
- EMC: EN 489 301
- Transportation: ETSI EN 2-2-019 300, ETSI EN 4-2-019 300 V2.1.2
- IEC 29 ,64-2-60068
- MIL-STD810-
- IP68 - IEC 60529
- Green: ROHS, WEEE

Alvarion Technologies

3, Arie Shenkar St.
Herzliya, 4672501
Israel
Tel: +972-3-7674200

Contact us at:
sales@alvarion.com

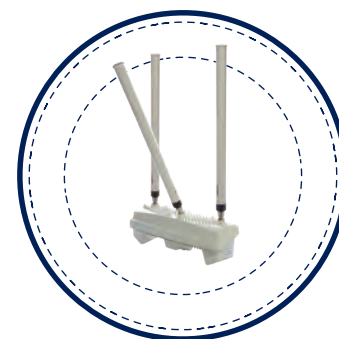
For local contact information
in your area, please visit
www.alvarion.com

About Alvarion Technologies

Alvarion Technologies is a global provider of autonomous Wi-Fi networks designed with self-organizing capabilities that enable constantly optimized performance. We are guided by our belief that the sustainability of any network stems from the combined strength of its elements.

We have developed an approach that is transforming Wi-Fi from a "dumb pipe" into a goldmine of actionable data. Alvarion designs solutions for Carrier Wi-Fi, Enterprise Connectivity, Smart City, Smart Hospitality, Connected Campuses and Connected Events that are both complete and heterogeneous to ensure ease of use and optimize operational efficiency. Carriers, Local Governments and Hospitality sectors worldwide deploy our intelligent Wi-Fi networks to enhance productivity and performance, directly and for the long term.

With over 25,000 sites in over 95 countries, our experience and know-how has enabled us to become a proactive contributor to the evolution of the Global Communications Network. As in everything we do, our commitment to elevating the Wi-Fi experience is reflected in our offering.



Configurations and Ordering Information

WBSn Base Station Types

Name	P/N	Configuration	Data Rates	Users	2.4GHz Radio	5GHz Radio
WBSn-2400-S-cc	1242050x	Sector	450 Mbps	256 users	+	
WBSn-2400-O-cc	1242010x	Omni	450 Mbps	256 users	+	
WBSn-2450-S-cc	1742050x	Sector	900 Mbps	512 users	+	+
WBSn-2450-O-cc	1742030x	Omni	900 Mbps	512 users	+	+
WBSn-2450-OS-cc	1742040x	Omni-Sector	900 Mbps	512 users	+ Omni	+Sector
WBSn-2450-SO-cc	1742060x	Sector-Omni	900 Mbps	512 users	+ Sector	+Omni

- Country codes: please specify the destination region with name and P/N by indicating:
cc = US/EU/UN/IL/JP/IN and correspondingly x = 6/5/4/3/2/1.
- PoE for outdoor WBSn: AC POE P/N 27004003 or DC PoE P/N 27004103 ordered separately.

- Power cables for outdoor WBSn: P/N 27001003 for US connector, P/N 27001103 for EU connector, ordered separately.



© Copyright 2016 Alvarion Technologies Ltd. All rights reserved. Alvarion® its logo and all names, product and service names referenced herein are either registered trademarks, trademarks, trade names or service marks of Alvarion Technologies Ltd. In certain jurisdictions. All other names are or may be the trademarks of their respective owners. The content herein is subject to change without further notice.
WBSn-216035-(A)

Data Sheet



Alvarion's Bolster family

WBSn carrier-grade Wi-Fi solution

Product Highlights

- Licensed Exempt frequencies: 2.4 GHz and 2.4/5 Ghz
- 802.11n 3x3:3 MIMO
- Spatially adaptive Beam forming
- Up to 450 Mbps per band (900 Mbps for both bands)
- FCC or ETSI compliance
- Omni or Sector Antenna
- Hotspot functionality
- Passpoint™ certified

Main Segments

- Corporate/Enterprise
- WISP
- Cellular data offload
- Small-medium business
- Municipality & public safety
- Education
- Utilities



WBSn Wi-Fi Base Station Family

Overview

Alvarion's powerful beamforming technology allows WBSn enables the construction of scalable Wi-Fi networks with Quality of Service (QoS), security and high service reliability. WBSn base stations are HW-ready for advanced Passpoint™ capable hotspots and include a rich set of networking features for core integration with cellular and fixed-line operators.

The WBSn solution ensures that carriers, service providers, governments and enterprises are able to deploy their wireless networks quickly and effectively with significantly fewer base stations, and at much lower costs.

Alvarion Technology Edge

Beamforming 802.11n, Interference Immunity

WBSn base stations combine two-way Beamforming 802.11n and interference immunity technologies together with 3x3:3 MIMO, delivering best capacity and coverage, with speeds of up to 450 Mbps per band.

Complete Solution

WBSn base stations are available in outdoor, Omni and Sector form factors, with simultaneous 2.4 and 5 GHz band support, for concurrent access in 2.4 and 5 GHz. WBSn is complemented by service provisioning, management tools, enabling numerous urban and rural applications at a lower cost per bit.

Carrier-Grade

WBSn outdoor base stations are carrier-grade, IP-68 rated, and come with a complete set of FCAPS management tools. The WBSn family of products is designed to provide the highest reliability, quality of service, security and manageability.

WBSn is a family of advanced carrier-grade WiFi base stations enhanced with unique two-way Beamforming 802.11n, interference immunity suite and 3x3:3 MIMO.

With powerful 2.4 and 5 GHz radios, WBSn delivers up to gigabit capacity and robust connectivity under challenging conditions of interference, Non-Line-of-Sight (NLOS) and outdoor-to-indoor penetration.

WBSn Base Station Family



Omni
WBSn-2400-0
WBSn-2450-0



Sector
WBSn-2400-S
WBSn-2450-S



Combined Sector-Omni
WBSn-2450-OS
WBSn-2450-SO

Benefits

- Gigabit Wi-Fi**
 WBSn base stations support 802.11n with three spatial data streams, for transmitting and receiving at speeds of up to 450 Mbps per band, and maximum aggregated capacity of up to one Gbps.
- Extended Outdoor and Indoor Coverage**
 The true spatially adaptive Beamforming leverages a unique High Gain Diversely Polarized (HGDP) antenna array for maximum performance. Beamforming signals traveling in different propagation paths are coherently combined at the receiver's antenna. This increases coverage by up to 50%, enables NLOS connectivity and indoor signal penetration.
- Carrier-grade Wi-Fi**
 WBSn base stations are designed for high reliability and manageability, including security and QoS features, FCAPS management suite, easy installation and a robust IP-68 outdoor units for harsh environments. WBSn base stations are equipped with rich set of networking features designed for core integration and homologation with cellular and fx-line operators.
- Passpoint™ certified**
 Allow seamless finding and selection of the right WLAN.
- WBSn Mesh**
 Utilize the powerful capabilities of the 802.11n standard, which delivers performance increases in coverage and capacity.
- Interference Immunity Suite**
 Alvarion's Interference Immunity Suite combines the inherent Beamforming ability to suppress interference, the Dynamic Interference Handling (DIH) algorithm that continuously optimizes receiver's parameters according to noise level, the Automatic Channel Selection (ACS) algorithm for best operating channel online selection, the Wi-Fi Rate Adaptation (WARA) for optimal rate selection in environments with high interference, and the capability of the sector antenna to reject noise out of the base station field-of-view.
- Rich Embedded Networking**
 WBSn base stations incorporate rich embedded networking capabilities, including Bridging, meshing, web redirect and hotspot support.
- Environmentally Friendly**
 WBSn is designed to be environmentally-friendly, with low power consumption, fewer sites to power, aesthetic smart design, and green standard compliance.
- Easy managed and monitored by the **Arena controller**
- WBSn and Arena controller embedded with **Alvarion OS**. Rich advanced networking features.

Applications

- Mobile Data Offloading and Hotspots
- Hotels and Resorts
- Residential and Business Access
- Malls and Large Retail Stores
- Rural Broadband
- Smart Cities
- Campus Coverage
- Smart Utilities

Configurations, Ordering Information and Specifications

Radio

	802.11 b/g/n Radio		802.11 a/n Radio	
Operating band*	2.400 – 2.483 GHz, 13 channels		4.900 – 5.900 GHz	
Modulations	802.11n : 3x3 MIMO with 3 spatial data streams 802.11g: OFDM 802.11b: DSSS		802.11n: 3x3 MIMO with 3 spatial data streams 802.11a: OFDM	
Data rates	802.11n: MCS0 – MCS23 802.11g: 6, 9, 12, 18, 24, 36, 48, 54 Mbps 802.11b: 1, 2, 5.5, 11 Mbps		802.11n: MCS0 – MCS23 802.11a: 6, 9, 12, 18, 24, 36, 48, 54 Mbps	
Bandwidth	20 / 40 MHz, 5 MHz steps		20 / 40 MHz, 5 MHz steps	
Outdoor WBSn	Sector	Omni	Sector	Omni
Max, transmit power** at antenna port	26 dBm, 1dB steps		26 dBm, 1dB steps	
Max EIRP	48 dBm	43 dBm	49 dBm	43 dBm
Antenna	HGDP 12 dBi 120°H x 16°V	7,5 dBi 360°H x 20°V	HGDP 14 dBi 120° H x 8°V	8,5 dBi 360°H x 10°V

Actual operating channels, transmission power and EIRP may be reduced for compliance with local regulations (FCC, ETSI, etc.)

Hardware Specification

Ports	Ethernet: auto-sensing 10/100/1000 Base-T		
	Sector	Omni	Sector-Omni / Omni-Sector
Power over Ethernet (PoE)	55VDC (only with Alvarion POE Injector) feed: 100-240 VAC at 47-63 Hz		
Power Consumption** (Nom./Max.)	19/23W, single band 22/30W, dual band	19/23W, single band 22/30W, dual band	22/30W, dual band
Dimensions (L x W x H)	38cm x 14cm x 39.5cm	38cm x 14cm x 9.5cm (excluding antennas)	38cm x 14cm x 43.5cm (excluding antennas)
Weight	2.4 kg single band 3 kg dual band	1.4 kg single band 2 kg dual band	3 kg
Additional weight	Post clamp 0.4 kg	Antennas: 0.2 kg Post clamp: 0.4 kg	Antennas: 0.2 kg Post clamp: 0.4 kg

May be lower under different regulations such as ETSI.